

Shield® Wood Effect Exterior Post Mounted Showcases

Post mounted version of the new aluminium light oak wood effect framed external showcase.

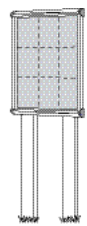
The showcase design has been tested and certified to the ip55 requirements of EN 60529 against dust and water ingress. This new frame finish offers a traditional look and feel but without the maintenance requirements that a wood product would require.

This post mounted showcase features a steel backing plate for rear weatherproofing and is supplied complete with galvanised and powder coated heavy duty steel posts for sunken or bolt down use.

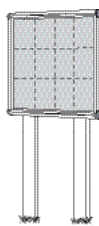
Available in four size options, supplied as a single showcase with a pair of applicable posts, the finished unit height is 2.0m across all sizes.

The post can accept a second showcase of the same size to make a double sided unit, extra showcase is available individually.

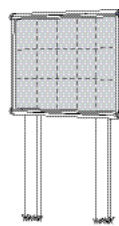
Units are top hinged complete with support stays for easy change of notices, two locks per unit with matching keys. Choose from 18 loop nylon colours for use with pins and Velcro or traditional pinnable cork surface.



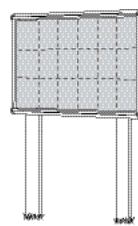
Size H 1050mm
W 752mm
Takes 9 x A4



Size H 1050mm
W 1012mm
Takes 12 x A4



Size H 1050mm
W 1182mm
Takes 15 x A4



Size H 1050mm
W 1397mm
Takes 18 x A4

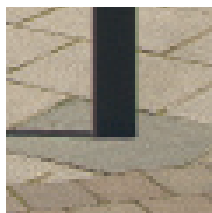
Standard loop nylon cloth colours



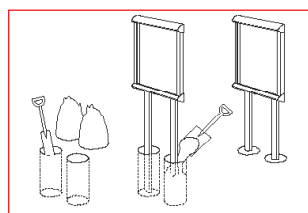
Wooden Effect Frame



Sunken Posts



Sunken Posts



Bolted Down



Bolted Down Posts

